

Mt. Edgecumbe High School for Environmental Action (MEAYEA)



SALMON SERIES

FISH FACTS

5 different species: Chinook, sockeye, pink, chum, and coho.

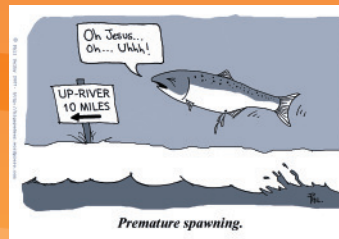
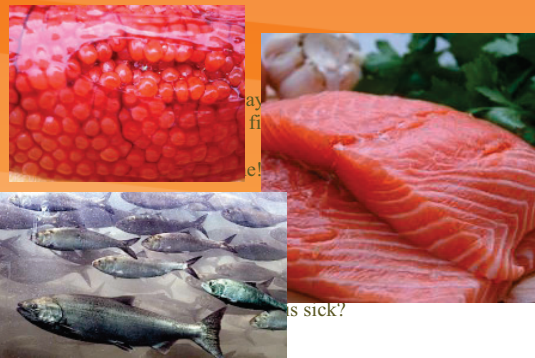
Salmon are one of the few creatures that can live part of their life in freshwater and the other in saltwater.

Salmon can jump 2 meters into the air when swimming upstream.

During spawning, salmon do not eat food.

The eggs lie in the gravel through the winter.

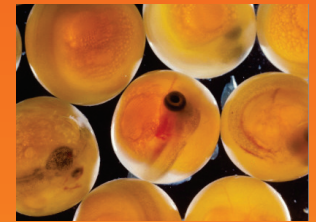
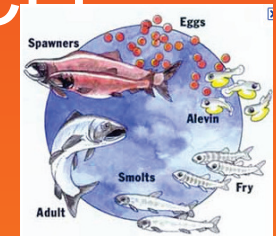
The alevin will stay in the red till spring or early summer.



"A monthly newsletter to educate Edgecumbe students about salmon, their life cycle, why they are important to the environment and to humans, also what is a big threat to the salmon. Read and answer trivia questions (school newspaper) for a chance to win a prize!"

-MEAYEA

LIFE CYCLE



Asset #40: Positive View of Personal Future | Young person is optimistic about her or his personal future.

Why are fish so smart?

Because they live in schools.